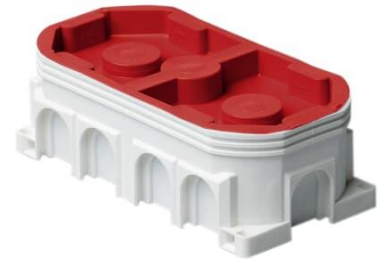

Double mounting box

Type: AU17.2

Product ID: 2TKA130026G1

GTIN: 6410011523896



The box AU17.2 has knock-outs for 11 inlets on the side, and 6 on the bottom. It can accommodate a device with a triple inlet.

If necessary, the box may be divided in two by using partition plate PMR345. Made of halogen free material (IEC/61249-2-21) and fulfills the requirements of the glow wire test according to the standard IEC/EN60670: 2005 (850 °C).

Technical specification

Packing

Package:	50
Unit:	PCS

ETIM Data

Mounting method:	Flush mounted (plaster)
Shape:	Rectangular
Construction type:	Device connection box (round/square)
Model:	Double
Provided with revolving ring:	No
Connectable:	Yes
Equipped with:	None
Length:	142 mm
Width:	71 mm
Depth:	142 mm

Product Card

Double mounting box



Inner depth:	45 mm
For number of electric fittings:	1
Mounting switching equipment:	Screwing
With screws:	Yes
Housing feed-through by break-out opening:	No
Housing feed-through by seal membrane:	No
Housing feed-through by nozzle:	No
Housing feed-through by step membrane:	No
For tube diameter:	20/25 mm
Pipe locking:	Yes
Pipe locking optional:	No
Inlet from the rear:	Yes
Material:	Plastic
Halogen free:	Yes
Surface protection:	Untreated
Colour:	White
Transparent cover:	No
Cover attachment:	Snapped on
Sealable:	No
With screening:	No
Air tight:	No
Clamp position fixed:	No
Luminaire hook mounting:	No
Special application:	None