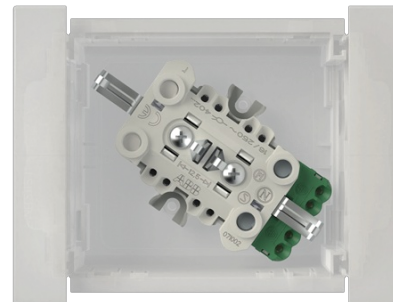

Socket outlet unit

2xShuko 16 A

Type: AUD11DSO

Product ID: 2TKA00005705

GTIN: 6438199023113



Socket outlet with terminals for each contact of the socket outlet for max 4 rigid wires. The socket outlet insert without the cover plate is screen-protected. The color of the center plate is blue.

Technical specification

Electrical quantities

Nominal current:	16 A
Nominal voltage:	250 V

Classification

Suitable for degree of protection (IP):	IP20
---	------

ETIM Data

Number of active pins (round):	2
With signal lamp:	No
Number of units:	2
Number of phases:	1
Imprint/indication:	None
Connection type:	Push-in clamp
With hinged lid:	No
With enhanced contact protection:	Yes
Label space/information surface:	No

Product Card

2xShuko 16 A



Colour:	White
RAL-number (similar):	9010
Metallic colour:	No
Transparent:	No
Lockable:	No
Eject-mechanism:	No
Insulated mounting:	No
With function lighting:	No
With orientation lighting:	No
Over voltage protection:	No
Fault current protection:	No
With miniature fuse:	No
Special power supply:	No special power supply
Mounting method:	Wall duct
Type of fastening:	Snap mounting (engagement)
Material:	Plastic
Material quality:	Thermoplastic
Halogen free:	Yes
Surface protection:	Untreated
Surface finishing:	Glossy
Anti-bacterial treatment:	No
With loop through function:	No
With on/off switch:	No
Rotated central insert:	No
Frequency:	50 Hz
Device width:	47 mm
Device height:	110 mm
Device depth:	85 mm
Compatible with Apple HomeKit:	No
Compatible with Amazon Alexa:	No
Compatible with Google Assistant:	No
IFTTT support available:	No
With Wi-Fi signal repeater:	No
With built-in bluetooth speaker:	No

Product Card

2xShuko 16 A



—
© ABB 2024

Business ID 0763403-0

www.installationmaterials.com

—
Customer service

puh. +358 10 222 1999

contact.center@fi.abb.com

—
ABB Exchange

+358 10 22 11