

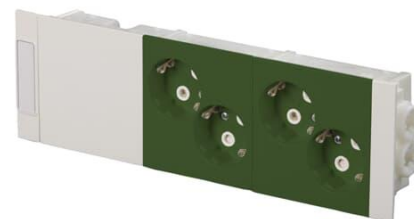
## Product Card

Prefabricated socket outlet unit Without imprint Protective contact (SCHUKO) with Hinged Lid Green - Impressivo



# AUD12-05

Prefabricated socket outlet unit Without imprint Protective contact (SCHUKO) with Hinged Lid Green - Impressivo



**Type:** AUD12-05

**Product ID:** 2TKA00005316

**GTIN:** 6438199013831

AUD12-05 Prefabricated socket outlet unit, 4-gang Schuko, green

## Technical specification

### ETIM Data

Number of active pins (round):	2
With signal lamp:	No
Number of units:	4
Number of phases:	1
Imprint/indication:	None
Connection type:	Push-in clamp
With hinged lid:	No
With enhanced contact protection:	Yes
Label space/information surface:	No
Colour:	Green
RAL-number (similar):	6025
Metallic colour:	No
Transparent:	No
Lockable:	No
Eject-mechanism:	No
Insulated mounting:	No

## Product Card

Prefabricated socket outlet unit Without imprint Protective contact (SCHUKO) with Hinged Lid  
Green - Impressivo



With function lighting:	No
With orientation lighting:	No
Over voltage protection:	No
Fault current protection:	No
With miniature fuse:	No
Special power supply:	No special power supply
Mounting method:	Wall duct
Type of fastening:	Snap mounting (engagement)
Material:	Plastic
Material quality:	Thermoplastic
Halogen free:	Yes
Surface protection:	Untreated
Surface finishing:	Matt
Anti-bacterial treatment:	No
With loop through function:	No
With on/off switch:	No
Rotated central insert:	No
Nominal current:	16 A
Nominal voltage:	250 V
Frequency:	50 Hz
Suitable for degree of protection (IP):	IP20
Device width:	0.045 mm
Device height:	0.085 mm
Device depth:	0.27 mm