

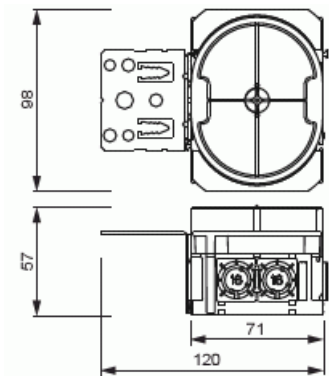
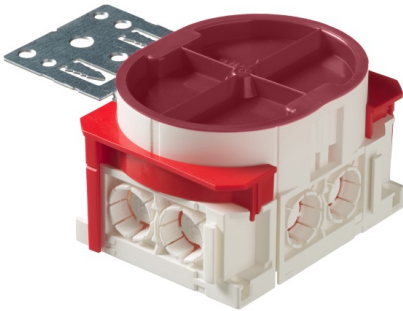
**Mounting box**

Mounting box for flat socket outlet

**Type:** AU81.2  
**GTIN:** 6438199004846



The box is mentioned for flat socket outlet ( for example 302EUJT ) installations with the flexible pipe. There is six knock outs for 16 mm pipes and two for the 20 mm pipe. In the bottom there is two knock outs for the bottom inlets.m The box includes a truss fixture and one red half circle which are enabling installation on boards with a thickness of 12- 26 mm. Made of halogen free material (IEC/61249-2-21) and fulfills the requirements of the glow wire test according to the standard IEC/EN60670: 2005 (850 °C).



**Technical specification**

**General Information**

Product ID:	2TKA00003223
-------------	--------------

**Packing**

Package:	25
Unit:	PCS

**ETIM Data**

Mounting method:	Flush mounted (plaster)
Shape:	Rectangular
Construction type:	Device connection box (round/square)
Model:	One and a half

## Product Card

Mounting box for flat socket outlet



Provided with revolving ring:	No
Connectable:	Yes
Equipped with:	Mounting plate
Length:	96 mm
Width:	122 mm
Depth:	96 mm
Inner depth:	54 mm
For number of electric fittings:	1
Mounting switching equipment:	Screwing
With screws:	Yes
Housing feed-through by break-out opening:	Yes
Housing feed-through by seal membrane:	No
Housing feed-through by nozzle:	No
Housing feed-through by step membrane:	No
For tube diameter:	16 mm
Pipe locking:	Yes
Pipe locking optional:	No
Inlet from the rear:	Yes
Number of inlets:	8
Material:	Plastic
Halogen free:	Yes
Surface protection:	Untreated
Colour:	White
Degree of protection (IP):	IP3X
Transparent cover:	No
Cover attachment:	Snapped on
Sealable:	No
With screening:	No
Air tight:	No
Clamp position fixed:	No
Luminaire hook mounting:	No
Special application:	None