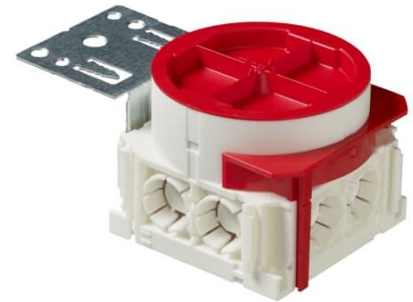

Mounting box

Mounting box with truss fixture

Type: AU80.2

Product ID: 2TKA00002541

GTIN: 6438199004273



The box is mentioned for the installations with the flexible pipe. There is six knock outs for 16 mm pipes and two for the 20 mm pipe. In the bottom there is two knock outs for the bottom inlets. The mounting box includes a rotating, steplessly adjustable extension ring with two locking wings. A truss fixture and one red half circle are enabling installation on boards with a thickness of 12- 39 mm. The minimum installation depth is 45 mm and overall height 58-73 mm. Made of halogen free material (IEC/61249-2-21) and fulfills the requirements of the glow wire test according to the standard IEC/EN60670: 2005 (850 °C).

Technical specification

Electrical quantities

Operating voltage:	400 V
--------------------	-------

Thermal conditions

Operating temperature:	-25 ... 90 °C
------------------------	---------------

Packing

Package:	60
----------	----

Unit:	PCS
-------	-----

Product Card

Mounting box with truss fixture



ETIM Data

ETIM Version:	ETIM-9.0
ETIM Class:	EC002601
Mounting method:	Flush mounted (plaster)
Shape:	Round
Construction type:	Device connection box (round/square)
Model:	Single
Provided with revolving ring:	Yes
Connectable:	Yes
Equipped with:	Mounting plate
Diameter:	71 mm
Length:	124 mm
Width:	74 mm
Depth:	124 mm
Inner depth:	54 mm
For number of electric fittings:	1
Mounting switching equipment:	Screwing
With screws:	Yes
Housing feed-through by break-out opening:	Yes
Housing feed-through by seal membrane:	No
Housing feed-through by nozzle:	No
Housing feed-through by step membrane:	No
For tube diameter:	16 mm
Pipe locking:	Yes
Pipe locking optional:	No
Inlet from the rear:	Yes
Number of inlets:	8
Material:	Plastic
Halogen free:	Yes
Surface protection:	Untreated
Colour:	White
Degree of protection (IP):	IP3X
Transparent cover:	No

Product Card

Mounting box with truss fixture



Cover attachment:	Snapped on
Sealable:	No
With screening:	No
Air tight:	No
Clamp position fixed:	No
Luminaire hook mounting:	No
Special application:	None