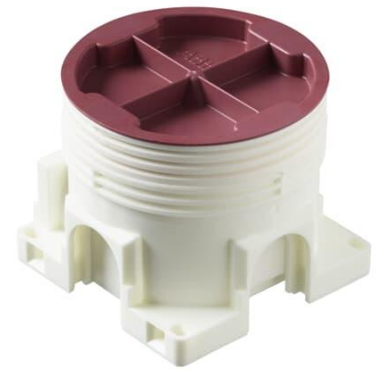


Mounting box

Mounting box + extension ring 12 mm

Type: AU3.24**Product ID:** 2TKA00001097**GTIN:** 6438199002927

The device offers mounting box AU3.2 modified with a 12 mm deep extension ring. It has a total of five knock-out inlets, two of which are on the same side. The bottom of the box provides access for two rear inlets. The boxes can be connected to each other with the PMR474 interconnector. Manufactured from halogen-free material, the box complies with the IEC/EN60670:2005 standard filament test (850°C).

Technical specification

Packing

| | |
|----------|-----|
| Package: | 100 |
| Unit: | PCS |

ETIM Data

| | |
|-------------------------------|--------------------------------------|
| Mounting method: | Flush mounted (plaster) |
| Shape: | Round |
| Construction type: | Device connection box (round/square) |
| Model: | Single |
| Provided with revolving ring: | No |
| Connectable: | Yes |
| Equipped with: | None |
| Diameter: | 71 mm |

Product Card

Mounting box + extension ring 12 mm



| | |
|--|------------|
| Length: | 71 mm |
| Width: | 71 mm |
| Depth: | 71 mm |
| Inner depth: | 57 mm |
| For number of electric fittings: | 1 |
| Mounting switching equipment: | Screwing |
| With screws: | Yes |
| Housing feed-through by break-out opening: | Yes |
| Housing feed-through by seal membrane: | No |
| Housing feed-through by nozzle: | No |
| Housing feed-through by step membrane: | No |
| For tube diameter: | 20/25 mm |
| Pipe locking: | Yes |
| Pipe locking optional: | No |
| Inlet from the rear: | Yes |
| Material: | Plastic |
| Halogen free: | Yes |
| Surface protection: | Untreated |
| Colour: | White |
| Transparent cover: | No |
| Cover attachment: | Snapped on |
| Sealable: | No |
| With screening: | No |
| Air tight: | No |
| Clamp position fixed: | No |
| Luminaire hook mounting: | No |
| Special application: | None |