
Cover plate

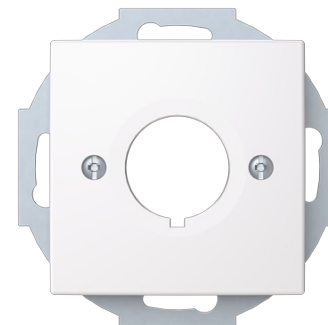
Cover Plates (partly incl. Insert) Bore hole 1 gang white - Busch-balance SI

Type: 2533-916-510

Product ID: 2CKA001724A4429

GTIN: 4011395316283

With screw-type terminal. Fixed with central locknut. As cover for pilot devices with a diameter of 22.5 mm Without claws.



Technical specification

Packing

Package:	1/10
Unit:	PCS

ETIM Data

Assembly arrangement:	Basic element with central cover plate
Utilization:	Bore hole
Support ring:	No
With dust cover:	No
With hinged lid:	No
Outlet direction:	Straight
Imprintable label:	Without indication field
With imprint:	No
Mounting method:	Flush mounted (plaster)
Material:	Plastic
Material quality:	Thermoplastic
Halogen free:	No

Product Card

Cover Plates (partly incl. Insert) Bore hole 1 gang white - Busch-balance SI



Anti-bacterial treatment:	No
Surface protection:	Untreated
Surface finishing:	Glossy
Colour:	White
RAL-number (similar):	9003
Transparent:	No
Type of fastening:	Mounting with screw
Number of modules (module system):	1
With buses/couplings:	No
Suitable for number of connectors:	1
With strain relief:	No
Shielded buses:	No
Shielded housing:	No
Luster terminal:	No
With lighting:	No
Suitable for degree of protection (IP):	IP20
Device width:	71 mm
Device height:	71 mm
Device depth:	18.1 mm
Min. depth of built-in installation box:	32 mm