

Product Card

Tele outlet, 22,5mm hole, black matt



Tele outlet

Tele outlet, 22,5mm hole, black matt

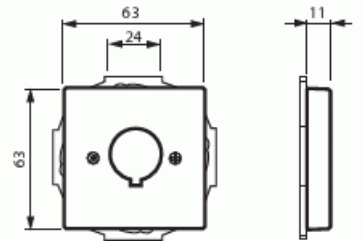
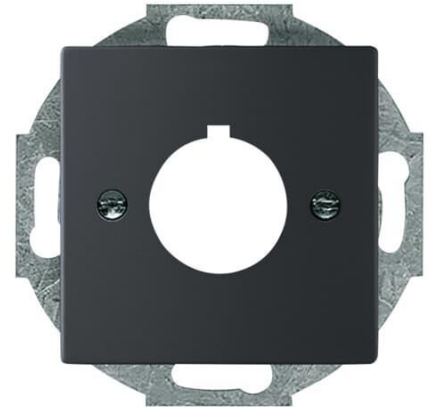
Type: 2533-885

Product ID: 2CKA001724A4301

GTIN: 4011395128756



Center plate with a round 22,5mm dented opening that prevents rotation. Used for fastening different devices. It is suitable for the 85mm cover frames. The manufacture material is a durable high quality plastic. The surface is painted. Cleaning with a mild, standard household detergent. Be careful when cleaning with a powerful dissolvent.



Technical specification

Packing

Package:	1
Unit:	PCS

ETIM Data

Assembly arrangement:	Control element
Utilization:	Bore hole
Support ring:	Yes
With dust cover:	No
With hinged lid:	No
Outlet direction:	Straight
Imprintable label:	Without indication field

Product Card

Tele outlet, 22,5mm hole, black matt



With imprint:	No
Mounting method:	Flush mounted (plaster)
Material:	Plastic
Material quality:	Thermoplastic
Halogen free:	Yes
Anti-bacterial treatment:	No
Surface protection:	Lacquered
Surface finishing:	Matt
Colour:	Black
RAL-number (similar):	9005
Transparent:	No
Type of fastening:	Mounting with screw
Number of modules (module system):	1
With buses/couplings:	No
Suitable for number of connectors:	1
With strain relief:	No
Shielded buses:	No
Shielded housing:	No
Luster terminal:	No
With lighting:	No
Suitable for degree of protection (IP):	IP20
Device width:	71 mm
Device height:	71 mm
Device depth:	17.8 mm
Min. depth of built-in installation box:	32 mm