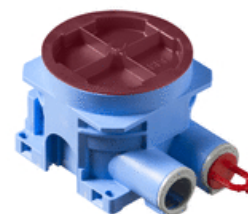


AU5.6

Name: **Mounting box**
 Mounting box, board thickness 13-27 mm
 System Ideal

Type: AU5.6

EAN: 6438199005027



Description: The mounting box includes a rotating, steplessly adjustable extension ring enabling installation on boards with a thickness of 13-27 mm. Installation depth is 55 mm and overall height 58-72 mm. The extension ring can be tilted 0-4° and the box has 2 opened branch inlets for 16/20 mm conduits. In addition, there are four knock-out inlets on the side, two 16 mm and one 20 mm inlet in the bottom. Made of halogen free material (IEC/61249-2-21) and fulfills the requirements of the glow wire test according to the standard IEC/EN60670: 2005 (850 °C).

Package: 50

Unit: PCS



Dimensions

For plastic pipe Ø16/20mm

Electrical quantities

Operating voltage 400 V

thermal conditions

Operating temperature -20 ... 60 °C

ETIM

ETIM 7 EC002601 (EC002601)

ETIM 8 EC002601 (EC002601)

ETIM 8

Mounting method Flush mounted (plaster)

Shape Round

Construction type Device connection box (round/square)

Model Single

Provided with revolving ring no

Connectable yes

Equipped with None

Diameter 71 mm

Length 113 mm

Width 71 mm

Depth 58 ... 72 mm

AU5.6

Internal depth	55 mm
Suitable for wall/board thickness	12 ... 24 mm
For number of electric fittings	1
Mounting switching equipment	Screwing
With screws	yes
Housing feed-through by break-out opening	yes
Housing feed-through by seal membrane	no
Housing feed-through by nozzle	yes
Housing feed-through by step membrane	no
For tube diameter	16/20 mm
Pipe locking	yes
Pipe locking optional	no
Inlet from the rear	yes
Number of inlets	9
Number of included spouts	2
Material	Plastic
Halogen free	yes
Surface protection	Untreated
Colour	Blue
Degree of protection (IP)	IP3X
Cover model	Construction protective cover
Transparent cover	no
Cover attachment	Snapped on
Sealable	no
Circuit integrity	None
With screening	no
Air tight	no
Max. conductor cross section	2.5 mm ²
Clamp position fixed	no
Luminaire hook mounting	no
Nozzle	None
With nail lugs	yes
Special application	None