



# ABB Junction boxes

## Top solutions for surface mounting

# ABB

## Top solutions for top professionals

**ABB junction boxes are the professional benchmark for their ease of installation and functionality. From the selection you can find the optimal solution and accessories for all regular electric installations.**

### **ABB Junction Boxes Features and Benefits**

- best raw materials
- halogen free
- best cable entries on the market
- robust design
- protection class up to IP 65



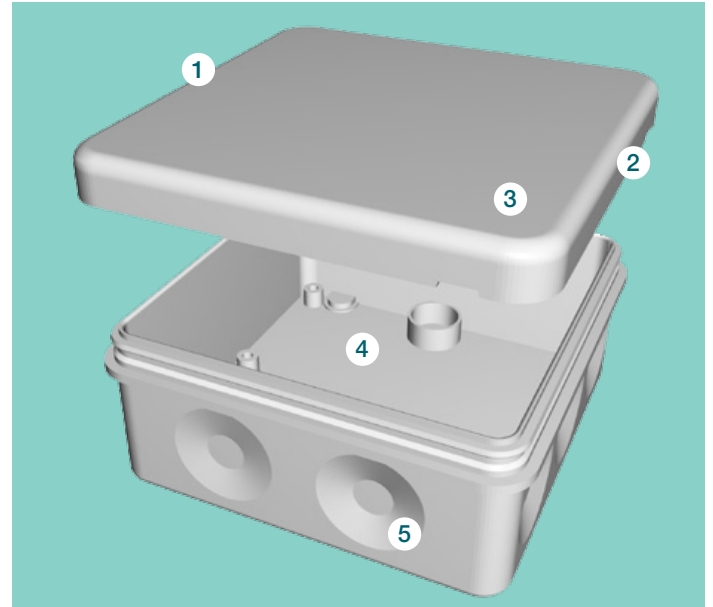
# AP9

## Features and Benefits

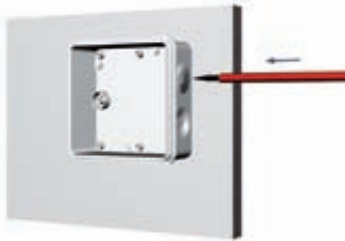
AP9 junction boxes are manufactured using a two-component system and include 10 easily perforated membrane cable entries on sides and 2 in the bottom, for cables up to 17 mm in thickness.

### The benefits of AP9

- 1 High quality halogen free material.
- 2 Quick snap-on cover fastening
- 3 Protection class IP 55.
- 4 Large space for connections.
- 5 Superior self-sealing membrane cable entries.



# Easy efficiency



Easy-to-open entries - perforate with screwdriver



or with cable.



Pull cable back to seal entry. Box enclosure class IP 55.



The box can be furnished with strain-reliefs (AS9.1 and AS9.3).



Strain-relief including 5-pole connector, AS9.



The box locks by snapping on the cover. No screws are needed.

# Surface-mounted junction boxes

## Junction box IP20

The AP6 square junction box is spacious and easy to wire. The box is equipped with an insulated 5-way connector. The transparent wire connector makes it easy to ensure sufficient wire depth. The maximum wire capacity per connector is 4 x 2,5 mm<sup>2</sup> or 6 x 1,5 mm<sup>2</sup>. The box has 6 knock-outs, 2 of which are in the bottom.

TYPE	CODE	DESCRIPTION	PACK.QTY
AP6	64 100 16 020 062	Junction box IP20	10/100
AP6.2	64 186 77 308 055	Junction box, grey, 60x60 mm, incl. connector	10/100

## Junction box IP20

The AP12 junction box has two 3-pole insulate 6 mm<sup>2</sup> connectors. The base plate offers a choice of eight different connection points for the connectors. In the bottom of the box there are three knock-outs. The cover has knock-outs in the corners and on the long sides of the cover. The maximum wire capacity per connector is 8 x 1,5 mm<sup>2</sup> or 5 x 2,5 mm<sup>2</sup>.

TYPE	CODE	DESCRIPTION	PACK.QTY
AP12	64 100 16 020 123	Junction box IP20	10/50
AP12.1	64 186 77 301 452	without conn.	10/50

# Surface-mounted junction boxes

## Surface-mounted junction box IP 65

The AP75 junction box (2,5 mm<sup>2</sup>, 400 V) is equipped with fixed, two-component membranelid cable entries, 10 in the sides and three on the bottom. It has a stiff frame. Suitable for cables up to Ø 18. The locks box by snapping and can be opened by inserting a screwdriver into the opening slots. Pull-out brackets make it possible to mount it to a conductive base. The box can also be sealed. Mounting temperature -15...+60 °C.

TYPE	CODE	DESCRIPTION	PACK.QTY
AP75	64 100 16 125 200	Surface-mounted 75 x 75 mm	5/50



## Junction box IP 55

The square junction box AP9 (2,5 mm<sup>2</sup>, 400 V) is equipped with 10 membrane cable entries (Ø 17 mm) in the sides, and two in the bottom. Cables are easy to connect by simply inserting the stripped ends through the inlets. The box locks by snapping and can be opened by inserting a screwdriver (for example) into the opening slots - no screws are needed. The box can be furnished with the strain-reliefs AS9, AS9.1 and AS9.3. Fits Ø 6 - 15,5 mm cable. VDE-approved. Mounting temperature is -15...+60 °C.

TYPE	CODE	DESCRIPTION	PACK.QTY
AP9	64 100 16 125 095	Junction box IP55 white	5/50
AP9M	64 186 77 329 906	Junction box IP55 ,black	5/50
AP9/G	64 100 16 125 088	Junction box IP55, grey	5/50



# Surface-mounted junction boxes



## Junction box IP55

The square junction box AP10 (6,0 mm<sup>2</sup>, 400 V) is equipped with 10 membrane cable entries (Ø 19 mm) in the sides, and two on the bottom. Cables are easy to connect by simply inserting the stripped ends through the inlets. The box locks by snapping and can be opened by inserting a screwdriver (for example) into the opening slots - no screws are needed. The box can be furnished with the strain-reliefs AS9, AS9.1 and AS9.3. Mounting temperature is -15...+60 °C.

TYPE	CODE	DESCRIPTION	PACK.QTY
AP10	64 100 16 125 101	Junction box IP55 white	5/50
AP10/G	64 186 77 307 287	Junction box IP55, grey	5/50



## Junction box IP44

The round junction box AP7 (2,5 mm<sup>2</sup>, 400 V) is similar to the AP9 and the AP10 and is equipped with 10 membrane cable entries (Ø 17 mm) and two in the bottom. Cables are easy to connect by simply inserting the stripped ends through the inlets. The cover is locked with two screws at distance of 78 mm. The box can be furnished with strain-reliefs AS9, AS9.1 and AS9.3.

TYPE	CODE	DESCRIPTION	PACK.QTY
AP7	64 100 16 125 170	Junction box IP44	5/50

# Surface-mounted junction boxes

## Junction box with connection cover IP44

The round, dual-component connection box AP7.1 (2,5 mm<sup>2</sup>, 400 V) is equipped with 10 membrane cable entries (17 mm) and two in the bottom. The cover of the box is equipped with three membrane seals (one Ø 20mm and two Ø 16mm) and with three strain-reliefs.

TYPE	CODE	DESCRIPTION	PACK.QTY
AP7.1	64 100 16 125 187	Junction box with connection cover	50/-



# Accessories for surface-mounted junction boxes

## Accessories for AP75

Strain-relief for junction box AP75.



TYPE	CODE	DESCRIPTION	PACK.QTY
AS12.3	64 100 16 125 217	Strain relief	10/250

## Strain-relief and connector

The junction boxes AP7, AP9 and AP10 can be furnished with the strain-relief AS9 for  $\varnothing$  6 - 19 mm cables. The strain-relief AS9 has a 5-pole connector (2,5 mm<sup>2</sup>). The maximum wire capacity per connector is 4 x 2,5 mm<sup>2</sup> or 6 x 1,5 mm<sup>2</sup>.



TYPE	CODE	DESCRIPTION	PACK.QTY
AS9	64 100 16 125 903	Strain-relief and connector	1/50

## Strain-reliefs

The junction boxes AP7, AP9 and AP10 can be furnished with the strain-relief AS9.3 for three cables  $\varnothing$  6-13,5 mm and the strain-relief AS9.1 for one cable  $\varnothing$  10,5-20 mm.



TYPE	CODE	DESCRIPTION	PACK.QTY
AS9.1	64 100 16 125 927	Strain-relief for 1 cable	1/50
AS9.3	64 100 16 125 910	Strain-relief for 3 cables	1/50

# Contact

**ABB Oy, Wiring Accessories**

P.O. Box 16 (Porvoon Sisäkehä 2)  
06101 Porvoo, FINLAND

tel. +358 10 22 11

[www.installationmaterials.com](http://www.installationmaterials.com)